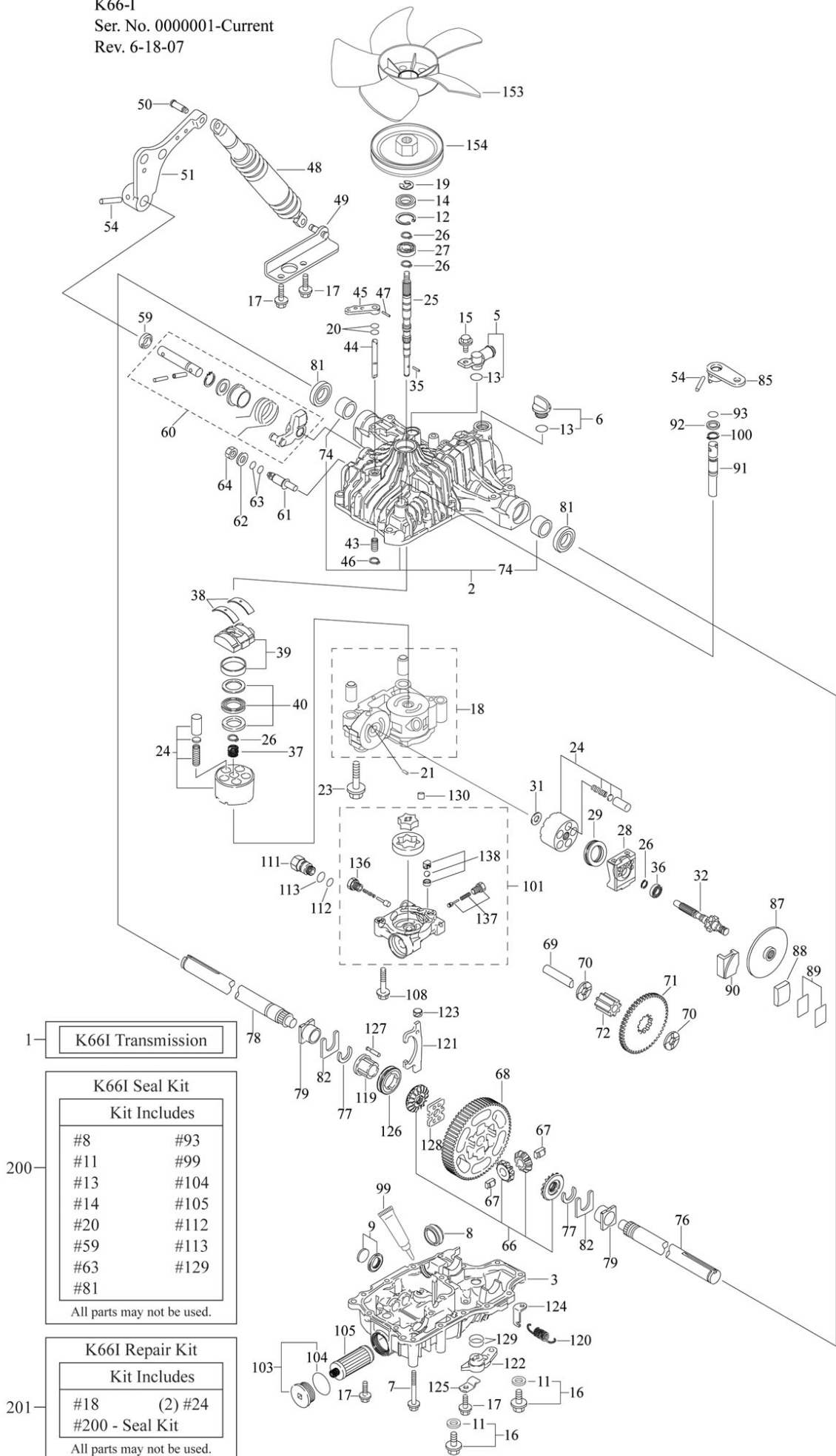


K66-I
 Ser. No. 0000001-Current
 Rev. 6-18-07



1- K66I Transmission

200- K66I Seal Kit

Kit Includes

#8	#93
#11	#99
#13	#104
#14	#105
#20	#112
#59	#113
#63	#129
#81	

All parts may not be used.

201- K66I Repair Kit

Kit Includes

#18	(2) #24
#200 - Seal Kit	

All parts may not be used.

K66I (7A646084590)

<u>ID Number</u>	<u>TTC Part No.</u>	<u>Part Description</u>
1	7A632084590	K66I TRANSAXLE
2	1A632024101	UPPER CASE KIT
3	1A632084500	LOWER CASE
6	19485524290	OIL CAP 20, PLASTIC
7	19215424310	CAP SCREW 8 * 75
8	1A632024320	FILTER
9	19216324350	MAGNET
10	1A632024920	FITTING
11	22190100000	SEAL WASHER 10
12	22252000350	SNAP RING C 35
13	24311000180	O-RING P18
14	24421153507	SEAL TC 153507
15	26106080202	BOLT 8 * 20
16	26106100122	BOLT 10 * 12
17	26476080302	TAPPING SCREW 8 * 30
18	1A632024860	CENTER CASE AB
19	19215485310	E-RING 15
20	24311240100	O-RING 1A P10A
21	19216824760	PIN 3 * 9.8
23	26106100652	BOLT 10 * 65
24	19216825210	CYLINDER BLOCK KIT
25	1A632085261	PUMP SHAFT
26	19215425310	SNAP RING S15
27	24101062020	BEARING 6202C3
28	1A632024210	MOTOR HOUSING
29	19215424240	THRUST BEARING
31	19216825230	WASHER 12 * 24 * 1
32	1A632085280	MOTOR SHAFT/GEAR (10T)
35	19215488330	PIN 3 * 13.8
36	24102063020	BEARING 6302DUC3
37	19215425200	PUMP SPRING
38	19215427051	THRUST METAL
39	1A632027100	SWASH PLATE ASSEMBLY
40	New Part #	THRUST BEARING KIT
43	19215427281	SPRING 25
44	1A632029510	BYPASS SHAFT
45	1A632029520	BYPASS LEVER
46	19216829570	SNAP RING 10
47	22351030020	SPRING PIN 3.0A * 20
48	19215489150	SHOCK ABSORBER K65
49	1A632029630	SHOCK STAY
50	1A632029640	PIN
51	1A632029650	CONTROL LEVER
54	22351060040	ROLL PIN 6 * 40
59	19406527270	SEAL TC 162606
60	1A632029801	CONTROL SHAFT KIT
61	1A632029700	FULCRUM
62	22137120000	WASHER 12
63	24311000140	O-RING 1A P14

64	26776120002	NUT 12
66	1A632081510	DIFFERENTIAL GEAR KIT
67	1A632081810	DIFFERENTIAL PINION PIN
68	1A632083540	FINAL GEAR (67T)
69	1A632083310	FINAL PINION SHAFT
70	1A632033420	WASHER 15 * 35 * 3.2
71	1A632083680	REDUCTION GEAR (55T)
72	1A632083360	FINAL PINION GEAR (11T)
74	19215434240	BUSHING 25.4
76	1A632089111	AXLE SHAFT, LEFT
77	19216734160	RETAINING RING 23
78	1A632089211	AXLE SHAFT, RIGHT
79	19216734240	BUSHING
81	19215434270	SEAL S25.4 * 42 * 8
82	1A632034290	THRUST WASHER
85	1A632029870	BRAKE LEVER
87	1A632036110	BRAKE DISC
88	1A632036120	BRAKE SHOE
89	1A632036170	SHIM KIT
90	1A632036201	BRAKE ACTUATOR
91	1A632036160	BRAKE SHAFT
92	1A632036190	WASHER 16 * 23 * 1.6
93	24311000120	O-RING 1A P12
99	Part of seal kit	SEALANT
100	22242000160	SNAP RING
101	1A632096150	PUMP CASE KIT
103	1A637024380	CAP 40
104	24351020400	O-RING 1A2040
105	1A632026450	FILTER
108	26106080452	BOLT 8 * 45
111	1A637026420	CONNECTOR
112	19485049290	O-RING 6.1
113	24311000160	O-RING P16
119	1A632084271	DIFF-LOCK COLLAR 25.4
120	19215333130	DIFF-LOCK RETURN SPRING
121	1A632087120	DIFF-LOCK FORK
122	1A632087151	DIFF-LOCK LEVER
123	1A632087160	LEVER PIVOT
124	1A632087170	SPRING HOOK
125	1A632087180	LEVER CLIP
126	1A632087260	DIFF-LOCK SLIDER
127	1A632087220	DIFF-LOCK PIN 7
128	1A632087230	DIFF-LOCK PLATE 7
129	24321000250	O-RING 1AG25
130	19452141570	ALIGNMENT SLEEVE 11 * 7
136	19216726300	CHARGE RELIEF VALVE
137	19216726250	IMPLEMENT RELIEF VALVE
138	1A637026350	3RD CHECK VALVE
153	19215489071	FAN, 9.0 CCW W/25.4 HEX
154	19215489061	INPUT PULLEY, 4" Dia.
200	1A632099250	K66B, D, I, K, M SEAL KIT
201	1A632099240	REPAIR KIT