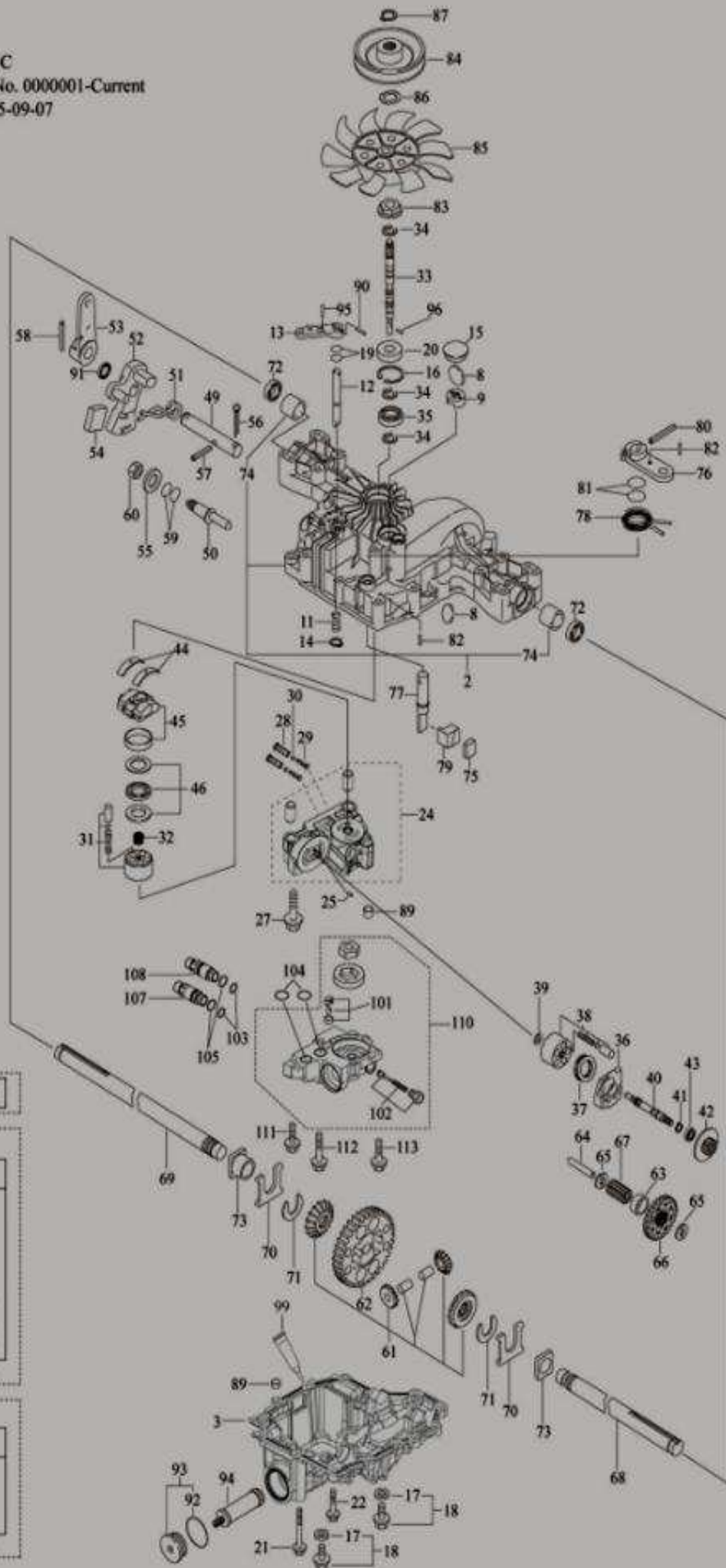


K574C  
 Ser. No. 0000001-Current  
 Rev. 5-09-07



1- K574C Transmission

K574C Seal Kit

Kit Includes

#17	#91
#19	#92
#20	#94
#30	#99
#59	#103
#72	#104
#81	#105

All parts may not be used.

200-

K574C Repair Kit

Kit Includes

#24	#38
#31	
#200-Seal Kit	

All parts may not be used.

201-

## K574C (787Q0324030)

<u>ID Number</u>	<u>TTC Part No.</u>	<u>Part Description</u>
1	787Q0324030	K574C TRANSAXLE
2	1A646084001	UPPER CASE KIT
3	187Q0324170	LOWER CASE (2 PORT)
5	1A646024280	TUBE
6	1A646024120	COBRA CLAMP
8	19216324360	MAGNET
9	1A646029000	MAGNET HOLDER
11	19215427281	SPRING 25
12	1A646089510	BYPASS SHAFT B
13	1A632029520	BYPASS LEVER
14	19216829570	SNAP RING 10
15	1C655036300	SEALING CAP 30
16	22252000350	SNAP RING C 35
17	22190080000	WASHER SEAL 8
18	26106080122	BOLT 8 * 12
19	24311240100	O-RING 1A P10A
20	24421153507	SEAL TC 153507
21	26106080552	BOLT
22	26476080302	TAPPING SCREW 8 * 30
24	187Q0334500	CENTER CASE J COMPLETE
25	19216824760	PIN 3 * 9.8
27	26106100752	BOLT 10 * 75
28	1A646024752	IDS VALVE
29	1A646024761	IDS SPRING
30	1A646024790	IDS FILTER 300
31	19216825111	CYLINDER BLOCK (PUMP) KIT
32	1A646025200	SPRING
33	187Q0388840	PUMP SHAFT
34	19215485310	E-RING 15
35	24101062020	BEARING 6202C3
36	187Q0324810	MOTOR HOUSING
37	187K0099750	THRUST (BALL) BEARING
38	187Q0025140	CYLINDER BLOCK (MOTOR) KIT
39	19216825230	WASHER 12 * 24 * 1
40	1A646025271	MOTOR SHAFT
41	19215425310	SNAP RING S15
42	1A646085400	BRAKE DISC/MOTOR GEAR (12T)
43	168T2025280	BEARING 6202 RSR C3

44	19216327051	THRUST METAL
45	19216327100	SWASH PLATE ASSEMBLY
46	19216327160	THRUST BEARING K81105
49	1A646029911	CONTROL SHAFT
50	168T2029920	FULCRUM
51	1A646029810	TORSION SPRING, HEAVY
52	168T2029740	CONTROL ARM A
53	1A646089831	CONTROL LEVER
54	168T2029350	JERKY PLATE
55	22137120000	WASHER 12
56	1A646029940	COTTER PIN 1/8" * 3/4"
57	22351060036	SPRING PIN 6 * 36
58	22351060040	ROLL PIN 6 * 40
59	24311000140	O-RING P14
60	26776120002	NUT 12
61	1A646031570	DIFF GEAR KIT
62	1A646033520	FINAL GEAR (54T)
63	1A646033250	FINAL PINION COLLAR
64	1A646033410	REDUCTION SHAFT
65	19216833420	WASHER 12 * 32 * 3.2
66	1A646083450	REDUCTION GEAR (31T)
67	1A646033531	FINAL PINION GEAR (10T)
68	1A646034111	AXLE SHAFT, LEFT
69	1A646034121	AXLE SHAFT, RIGHT
70	19216334261	THRUST WASHER
71	19216834270	RING 17
72	19216334280	SEAL 19 * 32 * 8
73	19216834350	BUSHING
74	168T2034240	BUSHING 19.05
75	1A646036121	BRAKE SHOE
76	1A646036160	BRAKE LEVER
77	1A646036171	BRAKE SHAFT
78	168T2036180	BRAKE RETURN SPRING
79	1A646036200	BRAKE ACTUATOR
80	22351050032	SPRING PIN 5 * 32
81	24311000120	O-RING P12
82	22351040016	SPRING PIN 4 * 16
83	1A646025300	SPLINE COLLAR
84	1A646025760	PULLEY B
85	1A646083070	FAN, BLACK
86	1A646083060	WAVE WASHER

87	19215489090	SNAP RING
89	19452141570	ALIGNMENT SLEEVE 11 * 7
90	22351030020	SPRING PIN 3.0A * 20
91	1A646024440	OIL SEAL 16 * 22 * .03
92	24351020400	O-RING 1A 2040
93	1A637024380	CAP 40
94	1A632026450	FILTER
95	22351030016	SPRING PIN 3.0A * 16
96	168P3B29690	PIN A
99	Part of seal kit	SEALANT
101	1A637026350	3RD CHECK VALVE
102	187Q0326300	CHARGE VALVE ASSEMBLY
103	24311240140	O-RING P 14A
104	19215424670	O-RING 1015
105	24311000160	O-RING 1A P16
107	187Q0324930	PIPING 3/8 A
108	187Q0324940	PIPING 3/8 B
110	187Q0326020	PUMP CASE COMPLETE
111	26106080252	BOLT 8 * 25
112	187Q0308090	TAPPING SCREW 8 * 90
113	26016080322	BOLT 8 * 32
200	187Q0399110	SEAL KIT (K574 A,B,C,E,F,G,H,J)
201	187Q0399300	REPAIR KIT (K574A,B,C,E,F,J)